



2 bed apartment to buy in LS1

15 South Parade, Leeds, West Yorkshire,
LS1 5PQ

£125,000 Starting Bid

 x2  x2  x1

Tenure

Leasehold

Property features

- ✓ Being Sold via Secure Sale Online Bidding. Terms & Conditions apply.
- ✓ 4th Floor Apartment
- ✓ Two Double Bedrooms
- ✓ Two Bathrooms
- ✓ EPC Rating C

Key Information

- ✓ Council Tax: Band E
- ✓ EPC Rating: C
- ✓ Heating supply: Electric

Description

Centrally located just off Park Row is this two double bedroom apartment on South Parade.

The apartment is currently tenanted on a fixed term contract until September 2026 at £1,100 pcm.

The property is situated on the 4th floor of a former bank office and has a grand staircase entrance and lift to all floors.

The apartment comprises; Hallway, open plan living area with large windows overlooking South Parade. A step up to the Kitchen which has a range of fitted units, electric oven, hob, fridge / freezer and washing machine.

Two double bedrooms, one with a shower room ensuite. House bathroom with a shower over the bath.

INVESTMENT INFORMATION The apartment is currently tenanted at £1,100 pcm. The tenancy is a fixed term until 25th September 2026

Rented furnished.

LEASEHOLD INFORMATION Lease: 999 years from 29 September 1999

Ground rent £260 pa

Service charge for 2025 £2,813.42 pa

COMMUNAL ENTRANCE Fob entry system. Mail boxes and lift to all floors.

HALLWAY Good size hallway with two storage cupboards, one housing the hot water cylinder.

LIVING AREA 26' 10" x 11' 9" (8.20m x 3.60m) max The open plan living area has large windows and electric heating.

KITCHEN (Open Plan) The kitchen has a range of fitted units with integrated electric oven, four ring hob and washing machine.

BEDROOM ONE 4' 7" x 8' 6" (1.40m x 2.60m) The first double bedroom has fitted wardrobe and access to the ensuite. Electric wall mounted heater.

ENSUITE Ensuite with shower cubicle, hand basin and W.C.

BEDROOM TWO 13' 7" x 9' 6" (4.15m x 2.90m) max The second double bedroom has feature wall lighting and electric heater.

BATHROOM The main bathroom comprises; bath with shower over, hand basin and W.C.

Council Tax Band: E

Tenure: Leasehold

Length of Lease: 972

Annual Ground Rent Amount: £260.00

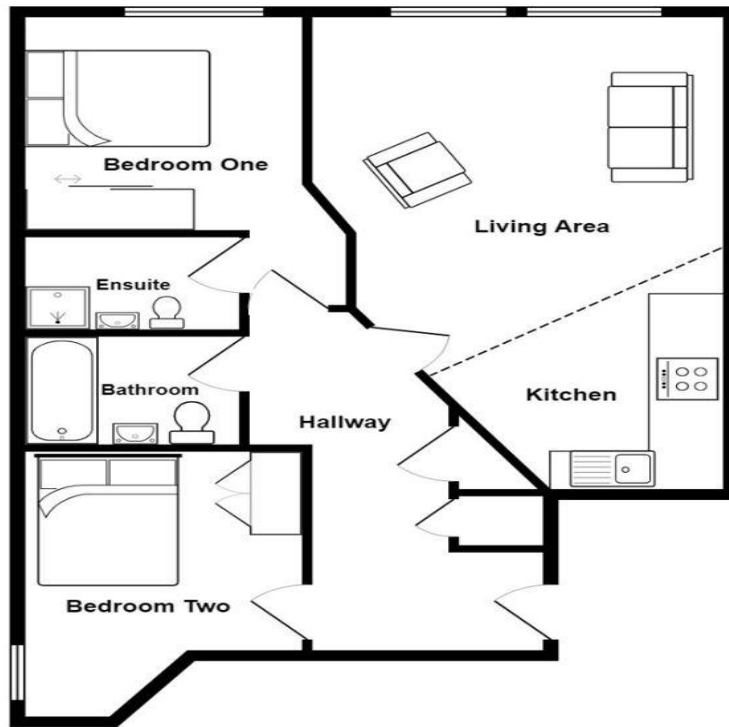
Annual Service Charge Amount: £2,814.00

Price: Starting Bid £125,000

Property Type: Apartment

Parking: None

Heating: Electric



15 South Parade
 Total Area: 62.0 m² ... 668 ft²

All measurements are approximate and for display purposes only

Energy Efficiency Rating		
	Current	Potential
<i>Very energy efficient - lower running costs</i>		
(92-100) A		
(81-91) B		
(69-80) C	80	83
(55-68) D		
(39-54) E		
(21-38) F		
(1-20) G		
<i>Not energy efficient - higher running costs</i>		
England, Scotland & Wales		EU Directive 2002/91/EC

15 South Parade, Leeds, West Yorkshire, LS1 5PQ

Contact your local branch today for more information on this property:

X UK, UK, UK, UK, UK, <https://nexuspropertyauctions.com>

These particulars, whilst believed to be accurate are set out as a general outline only for guidance and do not constitute any part of an offer or contract. Intending purchasers should not rely on them as statements of representation of fact, but must satisfy themselves by inspection or otherwise as to their accuracy. No person in this firms employment has the authority to make or give any representation or warranty in respect of the property.

